




# DELIVERING RESULTS

for Our Community & **YOUR** Business



**Think you know the  
Bradenton Area?**

A photograph of a cable-stayed bridge spanning a body of water. The bridge features tall, dark pylons and numerous stay cables. The water is calm, reflecting the sky and the bridge's structure. The text "Think again!" is superimposed in a large, bold, black font across the middle of the image.

**Think again!**



# Contestants...

# COME ON DOWN!

# Question #1

What innovative STEM Career Pathways Program is now available throughout the Manatee County School District?

- A) Engineering Rocks!
- B) **Woz ED Career Pathways Program**
- C) Totally-Tight-Tech







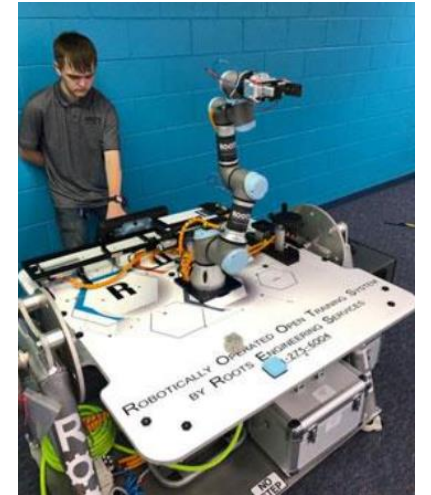
# Answer: B



VISION

## Changing the World

Continuing Steve Wozniak's vision, Woz ED provides a personalized approach to integrating career pathways from K-Employment so learners can land high-demand science and technology jobs and start changing the world.



## Question #2

Which of the following is TRUE about the Bradenton Area:

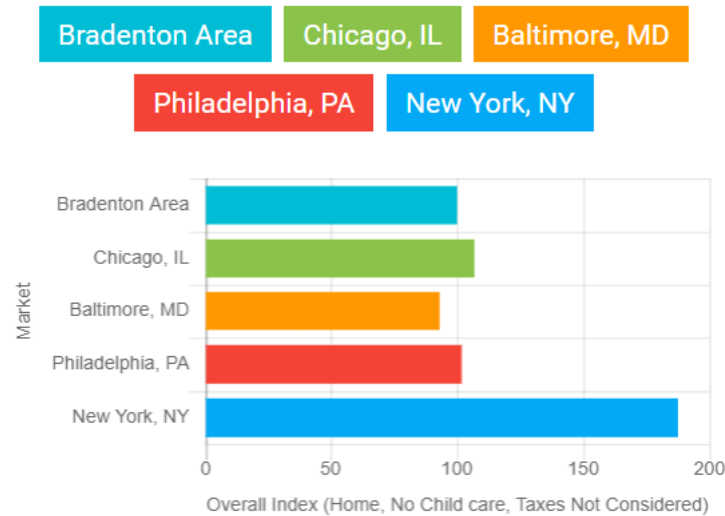
- A) The cost of living is .3% below the national average
- B) The corporate tax rate is 4.5%
- C) The personal tax rate is Zero
- D) All of the Above**
- E) None of the Above



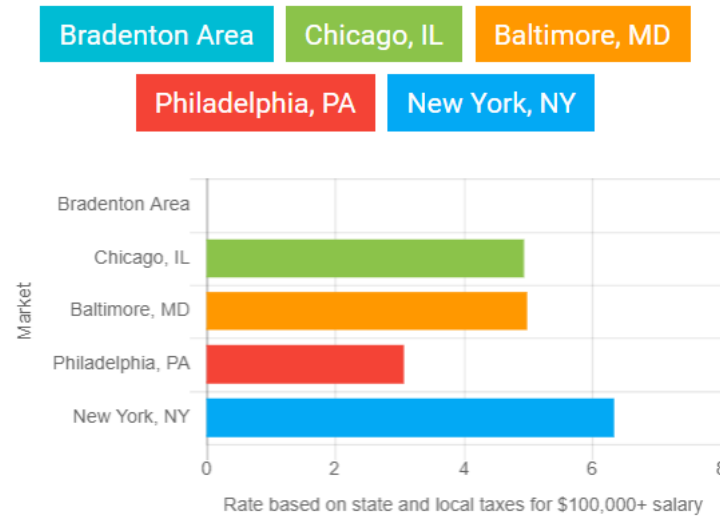
# Answer: D

# ALL OF THE ABOVE!!

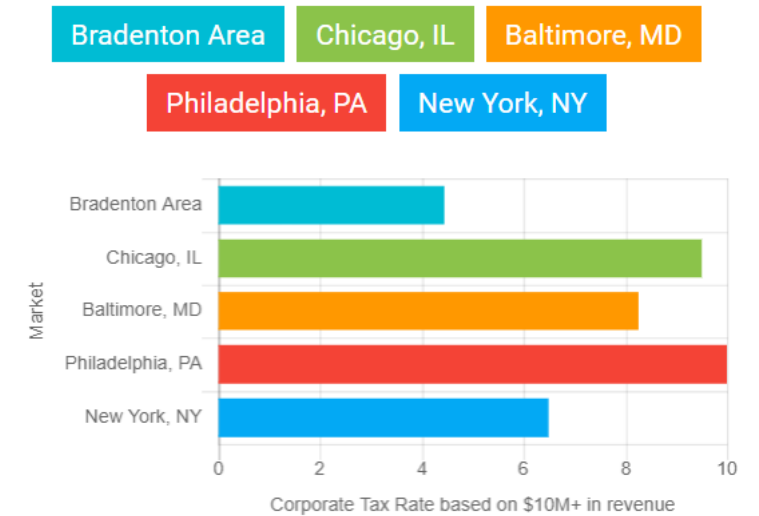
## Cost of Living @ \$100K annual wage



## Personal Tax Rate @ \$100K+ income



## Corporate Tax Rate @ \$10M revenue





## Question #3

Businesses in the Bradenton Area have access to a regional labor force of...

- A) Poll the Audience
- B) Can I ask Sharon?
- C) 1.8 Million



Answer: C



1.8 MILLION



## Question #4

What major airline carrier started service on Valentine's Day 2021 at Sarasota Bradenton International Airport?

A) **Southwest** 



# Answer: A



## Question #5

What exciting things are happening at State College of Florida, Manatee-Sarasota to promote Start-Up activity & Entrepreneurship?

- A) Entrepreneurship Hub
- B) SCF Coding Academy
- C) Creative Studio
- D) Academic Partnership Center
- E) ALL OF THE ABOVE**





# Answer:



## ENTREPRENEURSHIP HUB


An innovation community for local businesses and students.

- Entrepreneurship Academy
- Business Growth Lab
- Student Incubator
- Personal Branding Lab
- The Digital Collective



## SCF CODING ACADEMY

Where upcoming talent can develop cutting-edge skills through immersion courses, certificate programs, seminars, social events, and other gatherings to benefit both the technology sector and other businesses.

For more information, email Desh Bagley, Director IT/Coding Academy at [BagleyD@SCF.edu](mailto:BagleyD@SCF.edu) .



## CREATIVE STUDIO

A space providing video and creative services for educational and promotional content that empowers and inspires community members to understand, participate and support local entrepreneurs.



## ACADEMIC PARTNERSHIP CENTER

A hub that smooths the transition from area high schools to SCF and other partner universities for baccalaureate and graduate degrees. Current partners include the University of South Florida's FUSE program and the Florida Agricultural and Mechanical University's (FAMU's) IGNITE transfer partnership initiative.





## Question #6

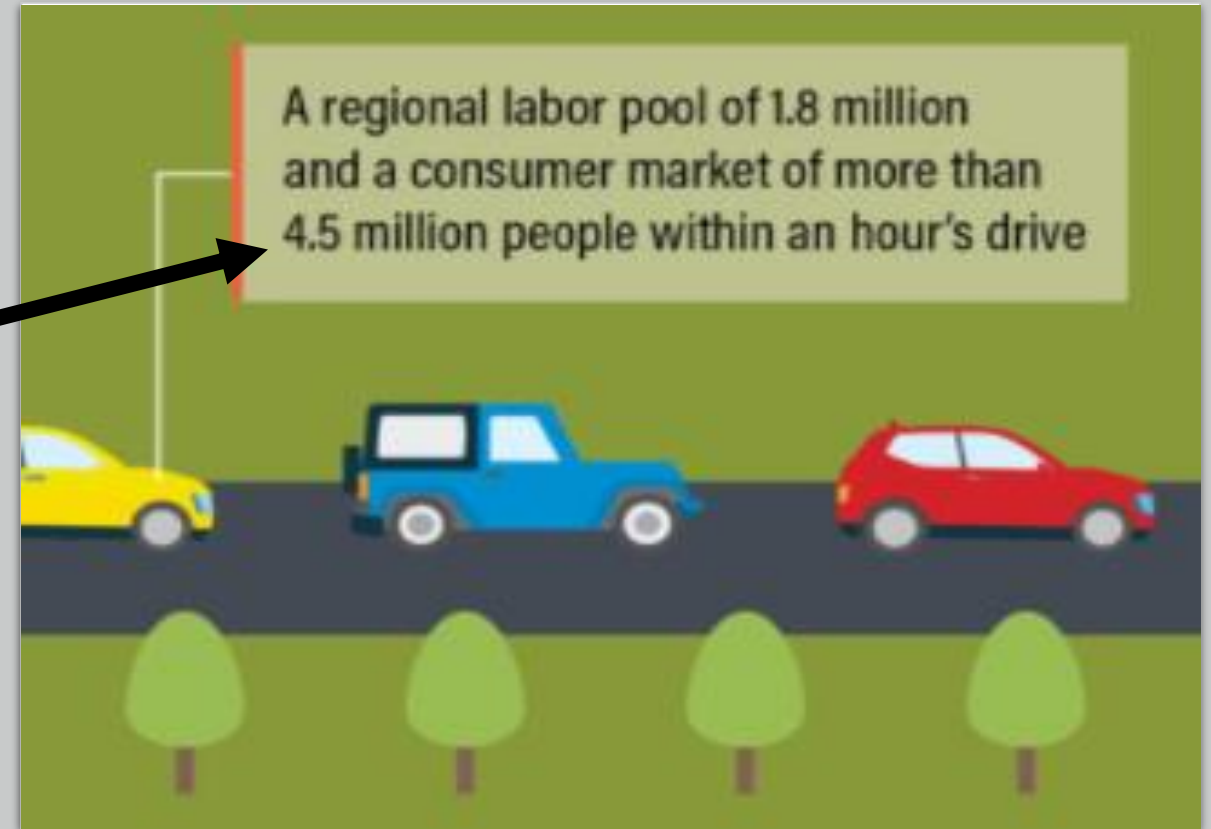
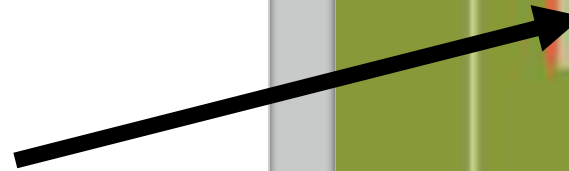
The Bradenton Area enjoys a consumer market of \_\_\_\_\_ people within a one-hour drive?

- A) 4.5 million
- B) Too many
- C) Can I buy a Vowel?



# ANSWER: A

4.5  
MILLION



## Question #7

Approximately how many acres around Port Manatee are ideally zoned for manufacturing, warehouse and distribution?

- A) Phone a Friend
- B) 1000
- C) 1 billion



# Answer: **B**



More than 1,000 acres ideally zoned for manufacturing, warehouses and distribution centers near a deep water seaport

A close-up, blurred image of a person's face, specifically the eye and nose area, looking through the eyepiece of a microscope. The image is out of focus, emphasizing the scientific nature of the subject.

LABOR POOL  
1.8 MILLION PEOPLE



[www.bradentonareaedc.com/we-mean-business](http://www.bradentonareaedc.com/we-mean-business)